



**it's your move!**

# Project Management

## Executive Committee Meeting

Chicago, Illinois

September 11, 2007

Marcia Brink

National CP Tech Center





## Executive Committee's Roles

- Obtain executive approval of the CP Road Map
- Prioritize tracks and determine track leaders
- Evaluate progress of CP Road Map
- Foster corporate sponsorships of research
- Have a global view of research and identify new or developing research
- Foster research integration between tracks
- Suggest tech transfer and training activities
- Lead Track 11 (Business Systems)

**What are the goals of each track?**

**What are the priorities?**

**What do leaders of track 12 need to know about track 6?**



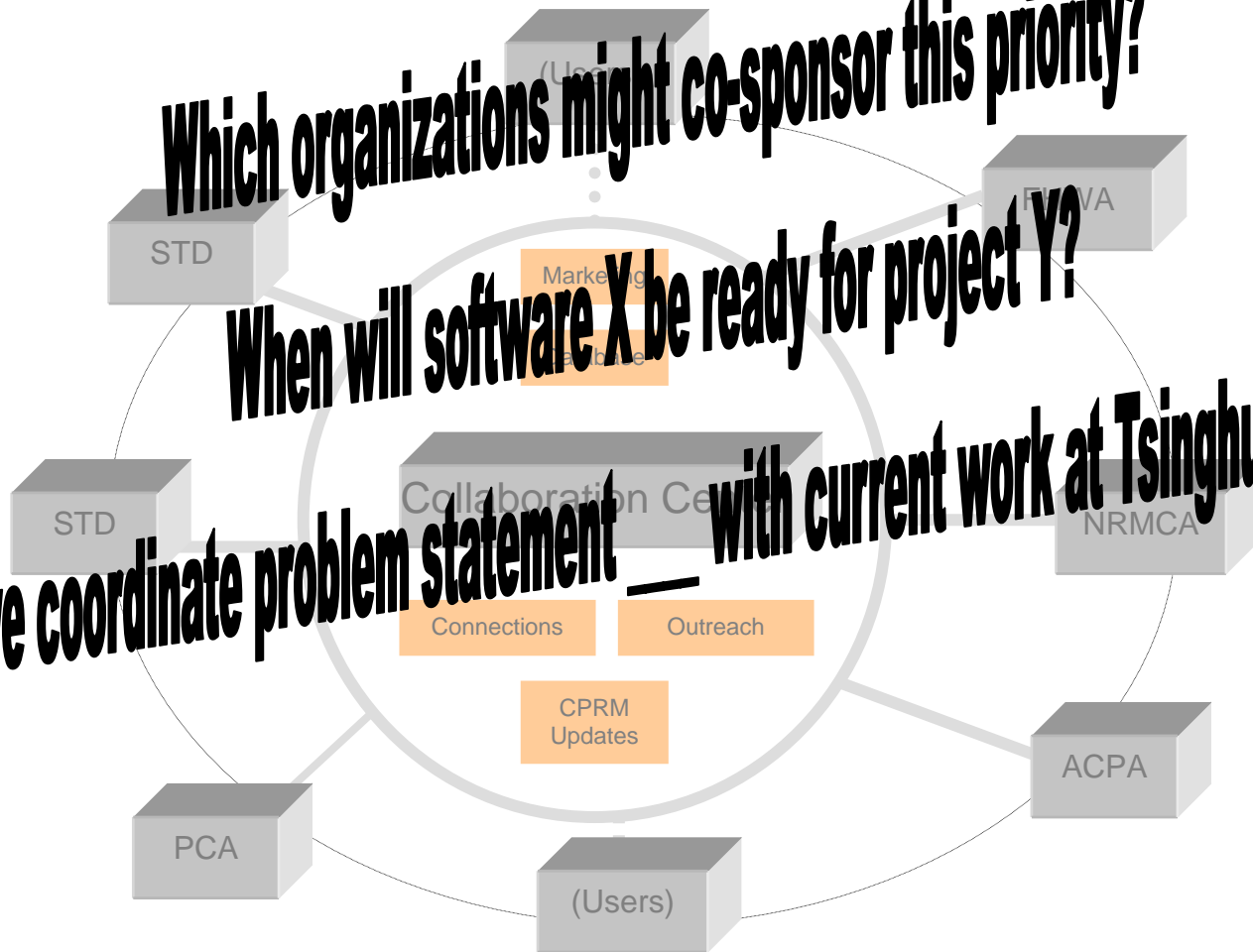


## Collaboration Center

**Which organizations might co-sponsor this priority?**

**When will software X be ready for project Y?**

**How can we coordinate problem statement — with current work at Tsinghua University?**



# Plan for Road Map Management System

- Many kinds of information:

1. Road Map Database (2005)	2. Relevant Research >2005	3. Additional Info ++++++
-----------------------------	----------------------------	---------------------------
- Sophisticated functionality requirements:
  - Many kinds of connectability
  - Sortable for many uses
  - Can be easily updated and enhanced
  - Accessible to many audiences with different information needs



## 1. Road Map Database (2005)

- Tracks
- Subtracks
- Problem statements

<http://www.cproadmap.com/research/search.aspx>



## 2. Relevant Research >2005

- Initiated or completed since 2005
- Related to Road Map problem statements

<http://www.cproadmap.com/research/search.aspx>



## 3. Additional Information Needed

- Road Map details:
  - Effect of recent research on Road Map
  - Updated priorities for each track
  - Project details (sponsor(s), researcher(s), schedule, tasks, products, budget, status, technology transfer, etc.)
- Background re Road Map (when, why, who, how, etc.)



## 3. Additional Information, continued

- Events calendar
- Directory
- Training opportunities
- News
- Help desk / information center
- Links to other research programs
- Marketing
- Publications and other products
- Etc.



## User-Friendly Access to Info

Information sortable for different users

- Researchers
- Research sponsors
- Executive Committee
- Administrative Support Group
- General information seekers



## User-Friendly Web Interface

- Straightforward, clean
- Invisible background database(s)
- Redundancy (many paths to information)



## Accomplished to Date

- New software
- Database(s) designed (adaptable framework)
- Populated with data from original database and from research >2005
- Some new data added (e.g., calendar)
- Website interface designed
- Some functionality added (e.g., MDA track, marketing “call to action”)



# Website Interface

[www.cproadmap.org/research/index.cfm](http://www.cproadmap.org/research/index.cfm)



## Additional Functionality Needed

- Revised priorities for all tracks
- Linkages between tracks
- Cross-referenced directories
- Forms for continually updating research related to Road Map
- Forums/blogs for collaboration
- Etc.



# SCC Blog

[www.surfacecharacteristics.com](http://www.surfacecharacteristics.com)



## Comments?

